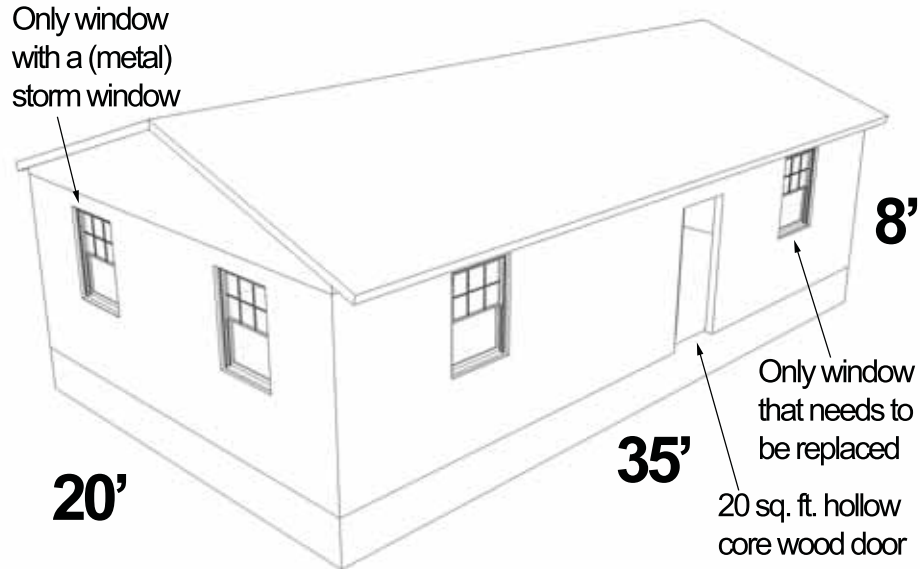
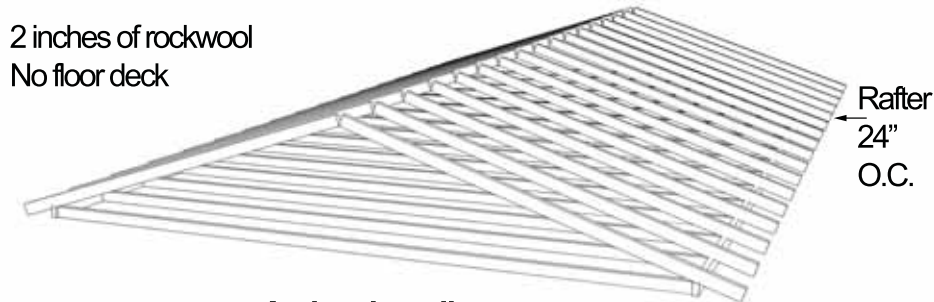


Site-Built Home - NEAT Example



North and East walls similar to South and West.
(exception: no windows to replace on North wall, no storm window on east wall)

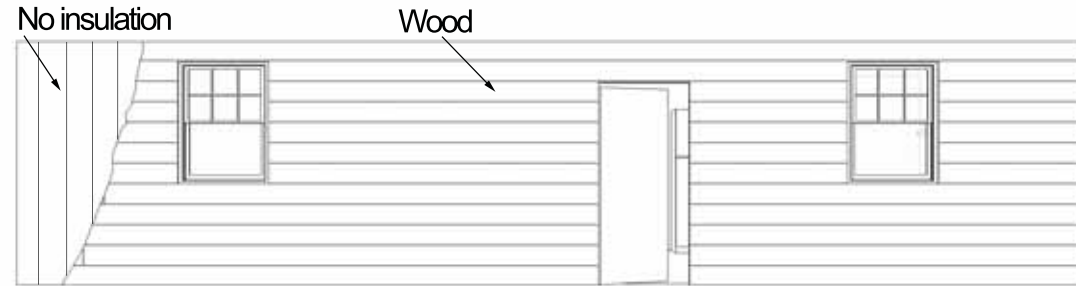


Attic details

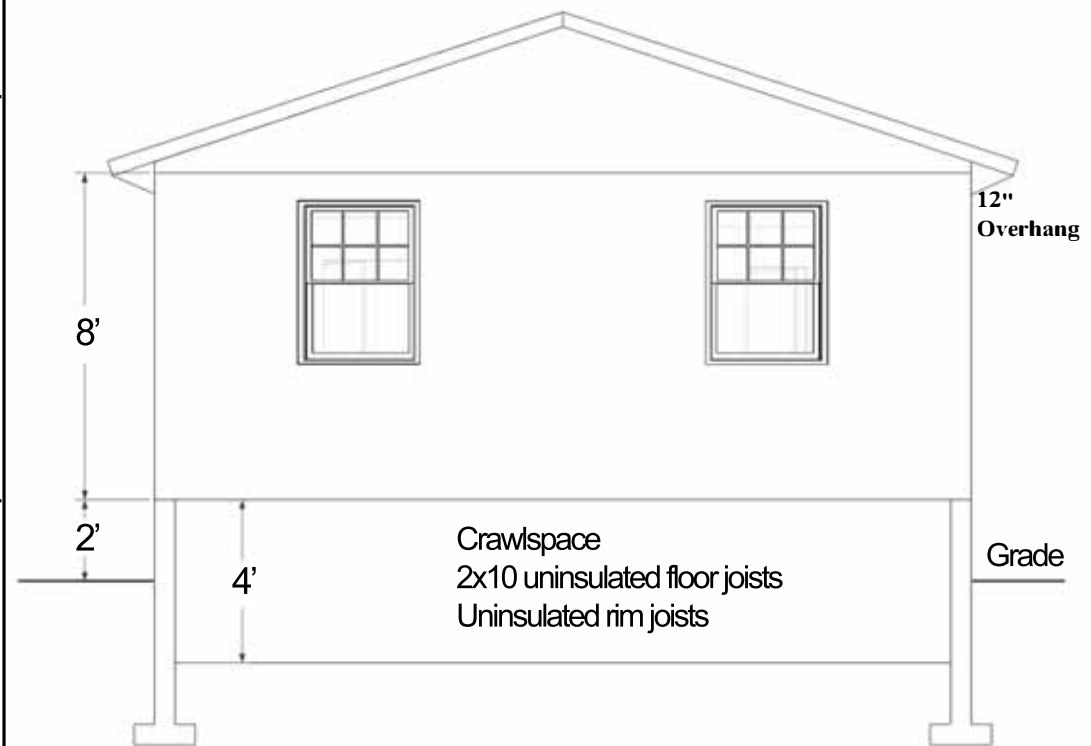
House Location: St. Louis, MO
Job Number: SL-2022-123
Client/Occupant: Anna Occupant
Total Occupants: 3

House Information

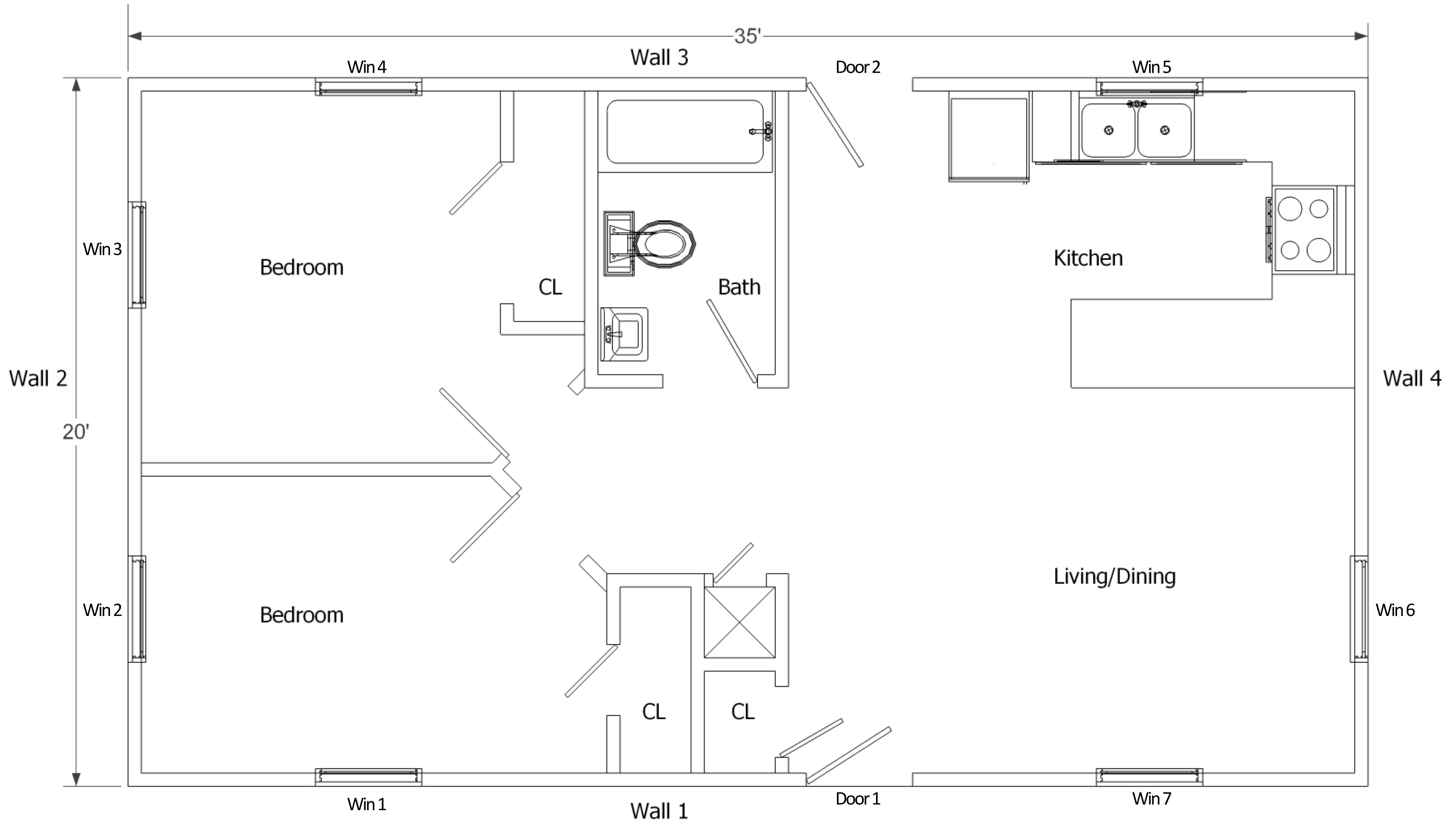
All windows are 24"x48" double-hung, single-pane, wood-framed with medium leakage. East and West overhangs are 12" at 12" above lintel (top of window). Interior shading is drapes.



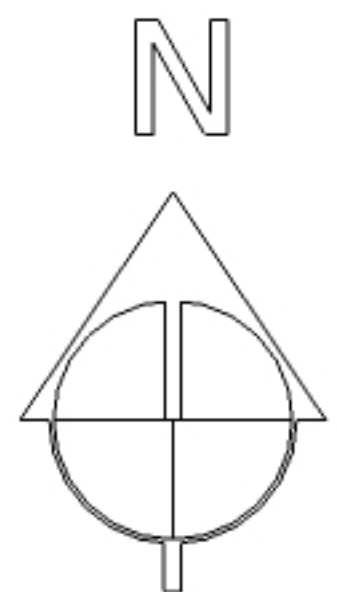
Wall and window details



Crawlspace details (vented)



2x4 Frame Wall
 No Insulation
 Wood Siding
 Platform Frame



5 Pine Street
 N.T.S.

NEAT Site Built Example Home

Heating System Information:

Primary Heating System:

Natural gas forced-air furnace located in closet inside the house Supplies 90% of the heat for the home

Rated at 80,000 Btuh input and 60,000 Btuh output capacity Site-measured efficiency of 69%

Poor Condition

Pilot light left on during summer

No setback thermostat, vent damper, or power burner

20 ft of 20"- diameter uninsulated supply duct located in the attic

60 ft of 8"- diameter uninsulated supply duct located in the attic

Evaluate equipment replacement ("Also Replaces" secondary heater):

96 AFUE replacement unit

\$1500 for furnace and \$900 for labor

Secondary Heating System:

3kW portable electric space heater that heats 10% of the house

Eliminate with replacement furnace

Cooling System Information:

18,000 Btuh window unit purchased in 1998

8,000 Btuh window unit with EER of 7 (estimate load served)

Infiltration Information:

4200 cfm50 pre-weatherization blower door reading

1500 cfm50 final blower door reading (estimated)

\$800 cost to perform infiltration reduction work (estimated)

Baseload Information:

Natural gas storage water heater with 1.5" of fiberglass insulation located in the kitchen

950 kWh/year, 13-year old refrigerator with poor door seal

(replacement refrigerator will be a 450 kWh/year unit costing \$650)

One 3.2 gpm showerhead used about 15 minutes per day

Fifteen 60 watt standard incandescent bulbs (lamps) in multiple locations used 2.5 hours per day

Special Items:

Install new flue costing \$30 with no expected energy savings from repair

Repair HW leak for \$50, 3 MBtu annual savings for 10 years, include in SIR